

LM-CA Table

(Ground Mount Structure)



Specifications

- ✓ Part Nr: LM-CA Table
- ✓ Material: Aluminium 6005-T5/6063-T6, Stainless steel SUS304, HDG steel
- ✓ Configurable structure, various layout options, Portrait and landscape

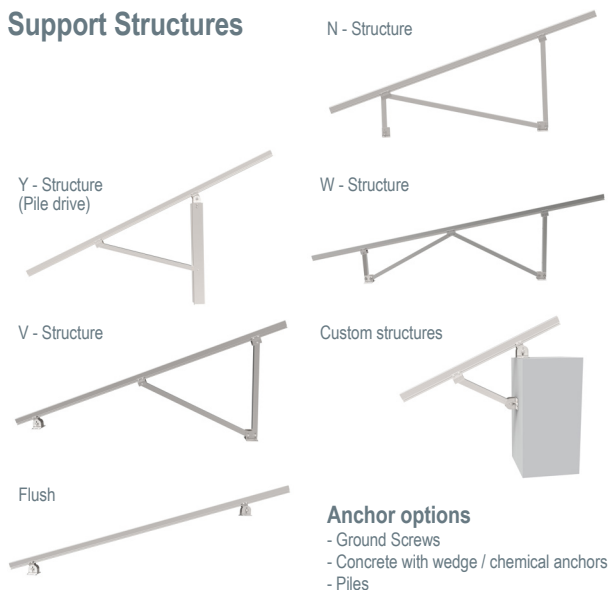
Features

- ✓ Durable, non-corrosive materials
- ✓ Compatible grounding washers, mid- and end clamps
- ✓ High profile purlin allow wide spans to minimise rafter and anchor requirements
- ✓ Supported by finite element analysis and mechanical fail testing

Application



Support Structures



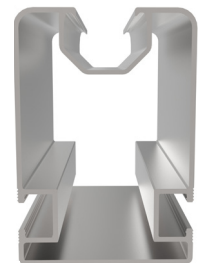
Purlin

112mm (h) x 51mm (w)

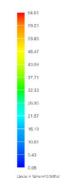


Rafter

80mm (h) x 55mm (w)



Finite Element Analysis



Lumax Energy
 Tel: +27 10 140 4933
 Email: energy@lumax.co.za

Address: Unit #3 - Summit Square 1,
 347 Roan Crescent, Corporate Park North,
 Midrand

www.lumaxenergy.co.za

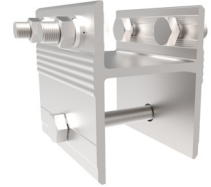


Standard Components

LM-EC40
End Clamp for
40mm framed panel



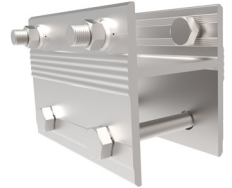
LM-TTC-90
T-Type1 Connector
Length: 90mm
M8x25 4PCS
M10*90 1PCS



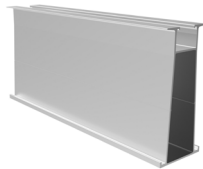
LM-IC40
Inter Clamp for
40mm framed panel



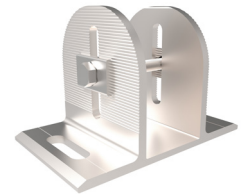
LM-TTC-120
T-Type2 Connector
Length: 60mm
M8x25 4PCS
M10*90 2PCS



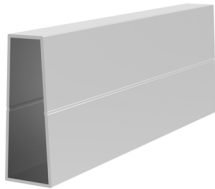
LM-R112
112mm Rail
Standard length:
3150/4150/5150/6200
Custom length



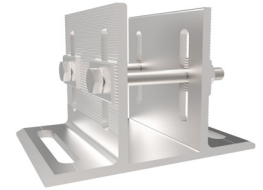
LM-FP90A
Foot Piece - Single
Length: 120mm
M10*100 1PCS
Aluminium Wave washer 2PCS



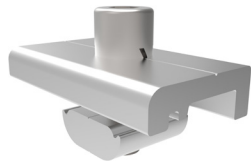
LM-RS-I-R112-300
112mm Rail Splice
Length: 300mm



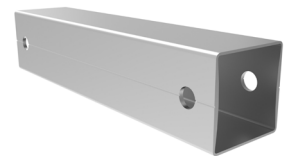
LM-FP120
Foot Piece - Double
Length: 120mm
M10*100 2PCS
Aluminium Wave washer 4PCS



LM-PRC
Cross Rail Clamp
(between rafter and purlin)



LM-SB-L
Support bar
Length: Length vary per design



LM-R80
80mm Rafter
Length: 3200mm
(Length vary per design)



**LM-GSF-ST-76*1200/
LM-GSF-76*1600**
Ground Screw with Flange
M14*40 2PCS
Diameter: 76mm
Length: 1200/1600/1800/
2000/2500mm
(Wide flange also available)



LM-TTC -60
T-Type1 Connector
Length: 60mm
M8x25 4PCS
M10*90 1PCS



Custom Components
Piles
Channels
Beams
Fasteners

