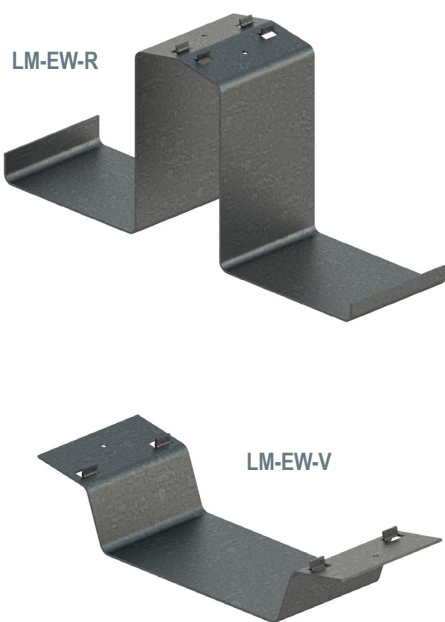


LM-EW



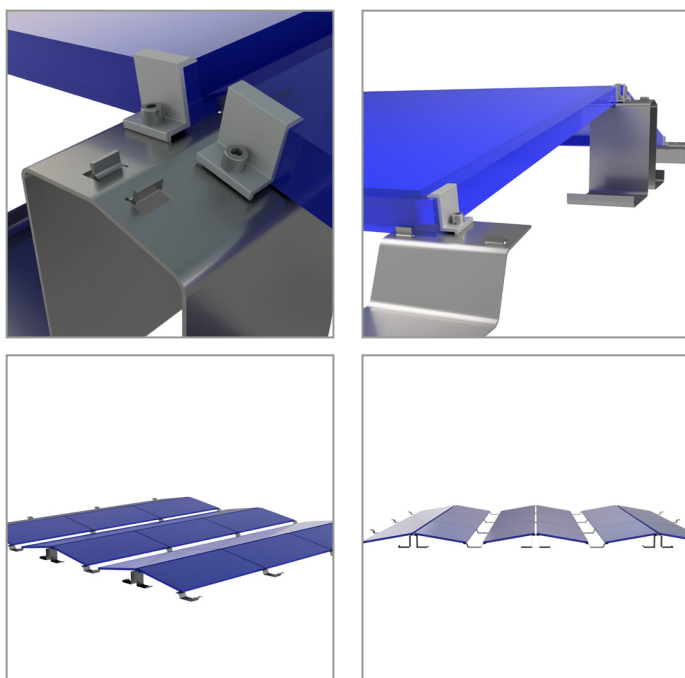
Specifications

- ✓ Part Nr: LM-EW
- ✓ Material: Mild Steel
- ✓ Hot Dip Galvanized > 60 µm

Features

- ✓ East-West facing 10° or custom
- ✓ Ballast mounting solution: No penetration on concrete roof required
- ✓ Penetration anchors also possible
- ✓ Fast and easy install
- ✓ Durable materials
- ✓ Direct mounting
- ✓ Good ventilation
- ✓ Short side clamping with standard Lumax module clamps
- ✓ Easy panel alignment utilising tabs
- ✓ EPDM sheet available if roof protection is required

Application



Dimensions



H 256mm x L 450mm x
W 143mm

3kg

Lumax Energy
Tel: +27 10 140 4933
Email: energy@lumax.co.za

Address: Unit #3 - Summit Square 1,
347 Roan Crescent, Corporate Park North,
Midrand

www.lumaxenergy.co.za

