

LM-NTC



Specifications

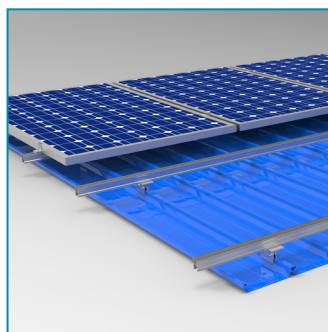
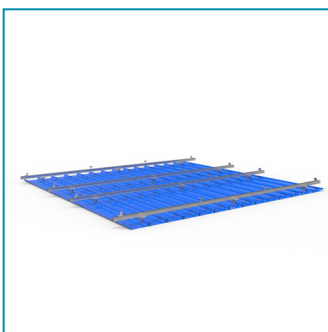
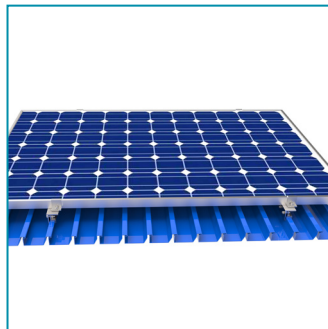
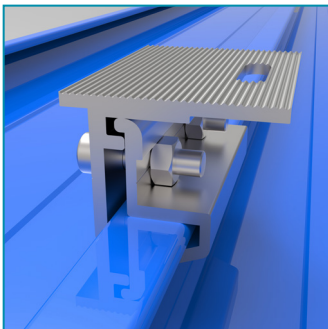
- ✓ Part Nr: LM-NTC
- ✓ Material: Aluminium 6005-T5, Stainless steel SUS304
- ✓ Anodized > 13 µm

Features

- ✓ Fast and easy install
- ✓ Attach to popular concealed fix metal roofs without sheet penetration
- ✓ Durable materials
- ✓ Metallurgical compatibility with most metal roofs
- ✓ Direct mounting or rail mounting methods supported for PV panels
- ✓ Good ventilation
- ✓ Resistant to over-tightening as bolts and nuts are stainless steel (no aluminium thread)

Application

Macsteel
NOVOTEXi
440



Dimensions



H 54mm x L 80mm x
W 60mm

220g (including fasteners)

Holding strength verified by:

SGS

Lumax Energy
Tel: +27 10 140 4933
Email: energy@lumax.co.za

Address: Unit #3 - Summit Square 1,
347 Roan Crescent, Corporate Park North,
Midrand

www.lumaxenergy.co.za

Lumax
ENERGY