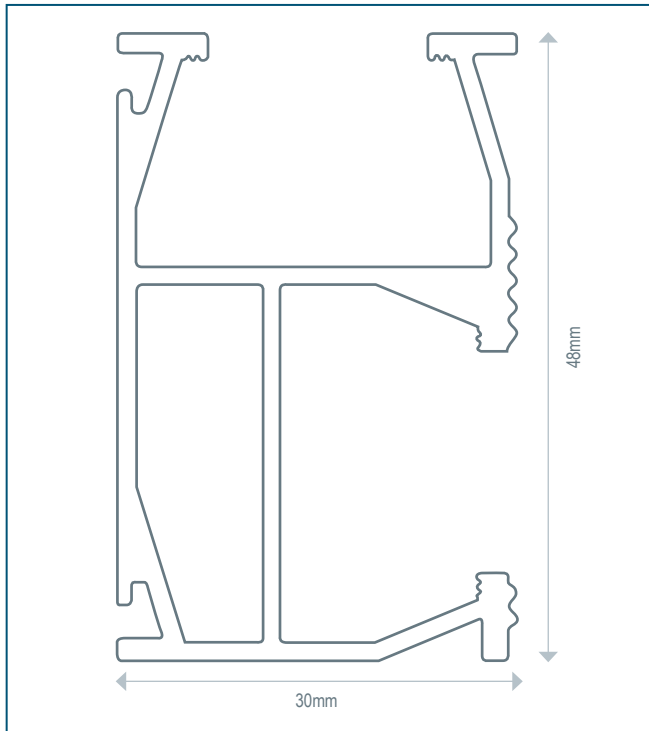


LM-R48



Specifications

- ✓ Part Nr: LM-R48
- ✓ Material: Aluminium 6063-T6

Features

- ✓ Aluminium rail system with range of accessories
- ✓ Good span capability up to 2.1m
- ✓ Durable, non-corrosive material
- ✓ Compatible grounding/bonding inserts, mid- and end clamps, rail splices, rail nuts, cross connectors and angle brackets
- ✓ Compatible with various brackets

Application

Most roof types, rail structures

Available without EPDM

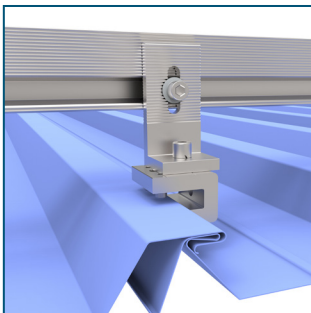
for fitting on standing seam roof clamps and other applications.

Dimensions



785g / m

H 48mm x W 30mm x
3.15m /
4.15m /
5.15m /
custom



Flush attachment options



Titled attachment options



Lumax Energy

Tel: +27 10 140 4933

Email: energy@lumax.co.za

Address: Unit #3 - Summit Square 1,
347 Roan Crescent, Corporate Park North,
Midrand

www.lumaxenergy.co.za

Lumax
ENERGY