

LM-SRL

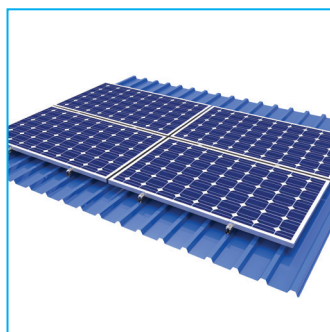
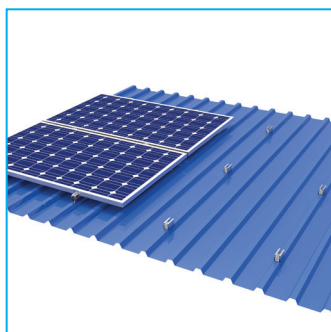
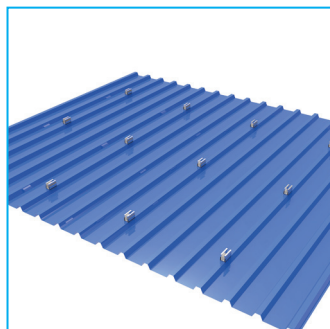
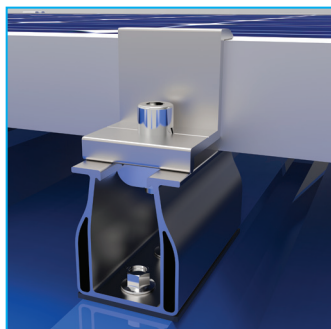


Specifications

- ✓ Part Nr: LM-SRL
- ✓ Material: Aluminium 6005-T5, Stainless steel SUS304, Optional EPDM, Vulcanised elastomer
- ✓ Anodized > 13 µm

Features

- ✓ Crest fix on flat horizontal surface
- ✓ Ideal for landscape mounting
- ✓ Fast and easy install
- ✓ Good ventilation clearance
- ✓ Advanced screw technology:
 - Bi-Metal
 - Sharp Carbon steel tip for easy and skid free piercing
 - Stainless steel head for anti-corrosive durability
 - High torque strip value
 - High pull out value per screw
 - No swarf (metal debris)
- ✓ Durable, non-corrosive materials
- ✓ Double gasket for waterproofing, EPDM layer and elastomer washer
- ✓ Compatible grounding washer, mid- and end clamps
- ✓ Also available without EPDM for fixing on concealed fix roof clamps



Application

Popular
trapezoidal
and IBR
sheets

Dimensions



L 80mm x W 40mm
x H 50mm

Weight with EPDM:

78.5g

Weight without EPDM:

69.5g

Lumax Energy
Tel: +27 10 140 4933
Email: energy@lumax.co.za

Address: Unit #3 - Summit Square 1,
347 Roan Crescent, Corporate Park North,
Midrand

www.lumaxenergy.co.za

Lumax
ENERGY