

LM-TBR-P



Specifications

- ✓ Part Nr: LM-TBR-P
- ✓ Material: Aluminium 6005-T5, Stainless steel SUS304, EPDM, Vulcanised elastomer
- ✓ Anodized > 13 µm

Features

- ✓ Fast and easy install
- ✓ Pre-punched holes matching all popular South African trapezoidal and corrugated sheeting
- ✓ Very good ventilation clearance
- ✓ Advanced screw technology:
 - Bi-Metal
 - Sharp Carbon steel tip for easy and skid free piercing
 - Stainless steel head for anti-corrosive durability
 - High torque strip value
 - High pull out value per screw
 - No swarf (metal debris)
- ✓ Durable, non-corrosive materials
- ✓ Double gasket for waterproofing, EPDM layer and elastomer washer
- ✓ Compatible grounding washer, mid- and end clamps

Application

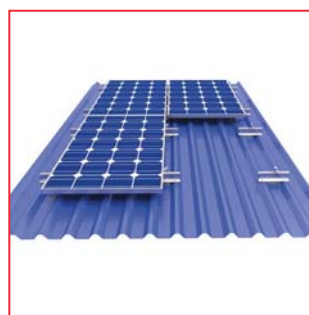
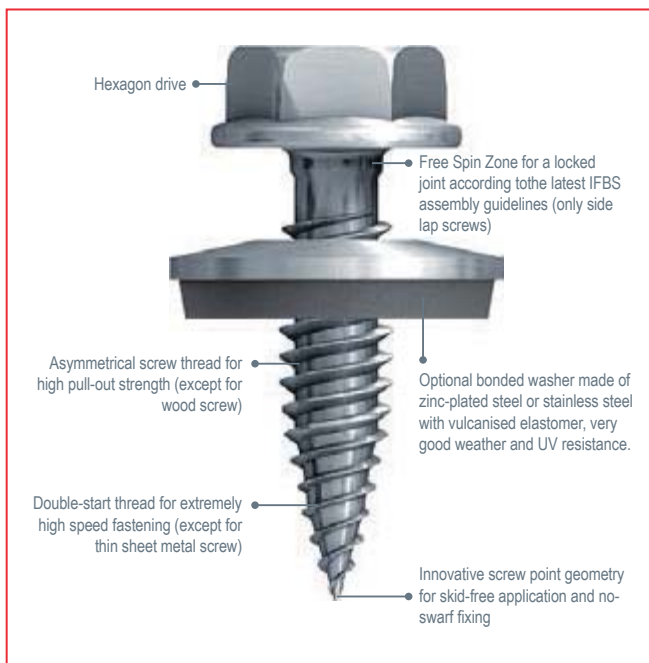


Dimensions



H 67mm x L 250mm x
W 75mm

318g (including screws)



Lumax Energy

Tel: +27 10 140 4933

Email: energy@lumax.co.za

Address: Unit #3 - Summit Square 1,
347 Roan Crescent, Corporate Park North,
Midrand

www.lumaxenergy.co.za

